

Inside this issue:

Mu Phi Epsilon – Alpha Zeta Chapter



Initiation and Big Reveal!

This year's initiation and big reveal weekend was so much fun! After the eight candidates were finally initiated as members we proceeded to Big Reveal! The first step was to have them eat a plate full of whip cream to get to the bottom, revealing a name of a member with a clue for them! The clue turned out to be a box they had to search for throughout the department, they proceeded to the next room where all the Bigs were hidden under blankets! The final task was to find the Big who was singing their favorite song. Keep in mind that the entire fraternity was also in the room, also singing at the top of their lungs! Once all littles were matched with their Bigs, at the countdown they were revealed! It was a wonderful and exciting weekend!

Initiation and Big	1
Calendar of Events	2
Mu Mu Candidate Concert and Pledge Project	2
#KeeleyStrong Benefit and Fundraising	3
RU Relay for Life— #KeeleyStrong Team	3
Spring 2015 Alumni Dinner!	4
Senior Recitals	4



May 2015

Sun	Mon	Tue	Wed	Thu	Fri	Sat
					1	2
3	4	5	6	7 	8	9 
10	11	12	13	14	15	16
17	18	19	20	21	22	23
24	25	26	27	28	29	30
31						

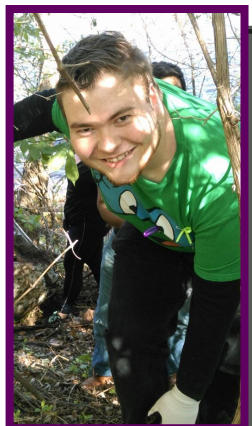
Schedule of Events:

- 5/7/15—Senior Roast @ 5pm
- 5/7/15—MPE
Camping @ 5pm
- 5/9/15—Radford University Spring Commencement!

Mu Mu Candidate Concert and Pledge Project

In the spirit of community service, our Mu Mu Candidate Class woke up bright and early on Saturday, April 11th to clean up the riverbank by Bisset Park for their candidate project. They were joined by a handful of our members, as well as candidates from the Xi Theta chapter of Phi Mu Alpha Sinfonia. Together, they covered about a half a mile of riverbank, clearing out old bottles, plastic, and other debris that had washed up over the years. They got down and dirty (really dirty!) but afterwards they were very proud of what they had accomplished!

Below: Candidates cleaning up the river bank.



Above: Candidate Alex Lyons



Above: MPE pledges Becky, Megan, and Christie, PMA pledge Kareem, and members Whitney and Emily

On April 18th, our Mu Mu class performed their candidate concert for our chapter, including a handful of visiting alumni, completing the final requirement for membership. Their performances included solo and ensemble work, ranging from singing with piano or guitar accompaniment, solo guitar and marimba, as well as a small woodwind and hand-percussion ensemble. Each performance was also recorded by members of the fraternity, with the hopes of creating a brand-new tradition of saving and showing each member's candidate performance during their own senior roast before graduation.

#KeeleyStrong Benefit and Fundraising

One of our Alpha Zeta alumni members, Laura Keeley, was recently diagnosed with Large B Cell Lymphoma and is undergoing intensive chemotherapy, but through it all she has remained positive and hopeful for the future! The AZ chapter really stepped up the plate with this one! Our head of finance, Kirsten Hamann, really took charge with fundraising for Laura and her family. She and her committee organized t-shirt and bracelet sales and a benefit night for Laura's team: #KeeleyStrong! The t-shirt sales were a big hit and we even had people from out of state asking to order shirts in support of Laura! The benefit night was an incredible event! There

were raffles, concessions, and live music all in support of Laura and her road to recovery! The event was as much for Laura's bank account as it was for her morale; although she has been in the hospital several times throughout the month she was singing, dancing, and laughing just as much as ever! The AZ chapter was able to raise over \$475 for Laura and her family, including a very generous donation from our local Phi Mu Alpha chapter!



RU Relay for Life—#KeeleyStrong Team

In conjunction with the #KeeleyStrong benefit and fundraisers the AZ chapter also participated in a Relay for Life event held on the RU campus. Many members of Mu Phi were able to attend along with members from Laura's church and her family and friends we comprised team #KeeleyStrong! We were able to watch Laura in the survivor's lap, participate in event activities, and we raised even more money at this event for both the Keeley family and the American Cancer Society!

However, one of the most poignant moments at this event was when our local Phi Mu Alpha chapter serenaded Laura with their "Phi Mu Alpha Girl" song; it was a very touching moment that showed even though we are in different fraternities, we can come together as one.



Spring 2015 Alumni Dinner!

This semester we decided to combine our Progressive Dinner with our Alumni Dinner so that the alumni could participate! The theme for this semester's dinner was "Game Night!" and we were able to host it at Grove United Methodist church (where we have also volunteered for Project Linus). Alumni Chris Smith and Sara Slone were able to join us along with our collegiate chapter alumni Liza Sutphin, Erica Weiner, and Adam McAllister. We were also able to have all of our candidates at the

event as well! For the appetizers we had many different flavored wings and finger foods and we spent the majority of our time outside enjoying the beautiful weather playing games including Red Rover, Simon Says, Red Light Green Light, and soccer! For the main course we had a pizza party where member Emily Surface introduced everyone to a very dangerous jellybean game: similar to the famous Bertie Bott's Every Flavor Beans from the Harry Potter movies Emily had jellybeans of different colors but for every color there were two different flavors possi-

ble. For example, if you picked a yellow jellybean you would either get popcorn or rotten eggs. Most members were not so lucky... For the dessert we retired to the basement where we had ice cream and baked goods and played many types of card games! Although the alumni attendance was fairly low this semester the level of fun was extremely high! The alumni were able to get reacquainted with the fraternity and everyone was able to spend some time and get to know one another! All in all a very successful event!



Senior Recitals

We had numerous Senior Recitals this month! All members performed beautifully and we are so proud of their accomplishments! Congratulations to all!



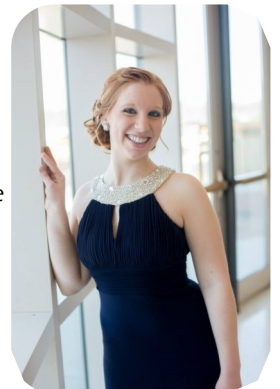
Left: Eric Westray

Right: Samantha Onstad



Left: Molly Cox

Right: Katie Metzler



Alpha Zeta



Alumni Committee Head: Katie Metzler
Email: kmmetzler@radford.edu

Music, Friendship, and Harmony!

Just a reminder to all alumni! If you know of any MPE alumni that are not on the email list and/or that are not part of the Facebook page PLEASE, PLEASE let me know!!! I really want to make sure that all alumni are as involved as possible! Thank you all for your continual support and active participation!



Phamily Photo Spring 2015!